

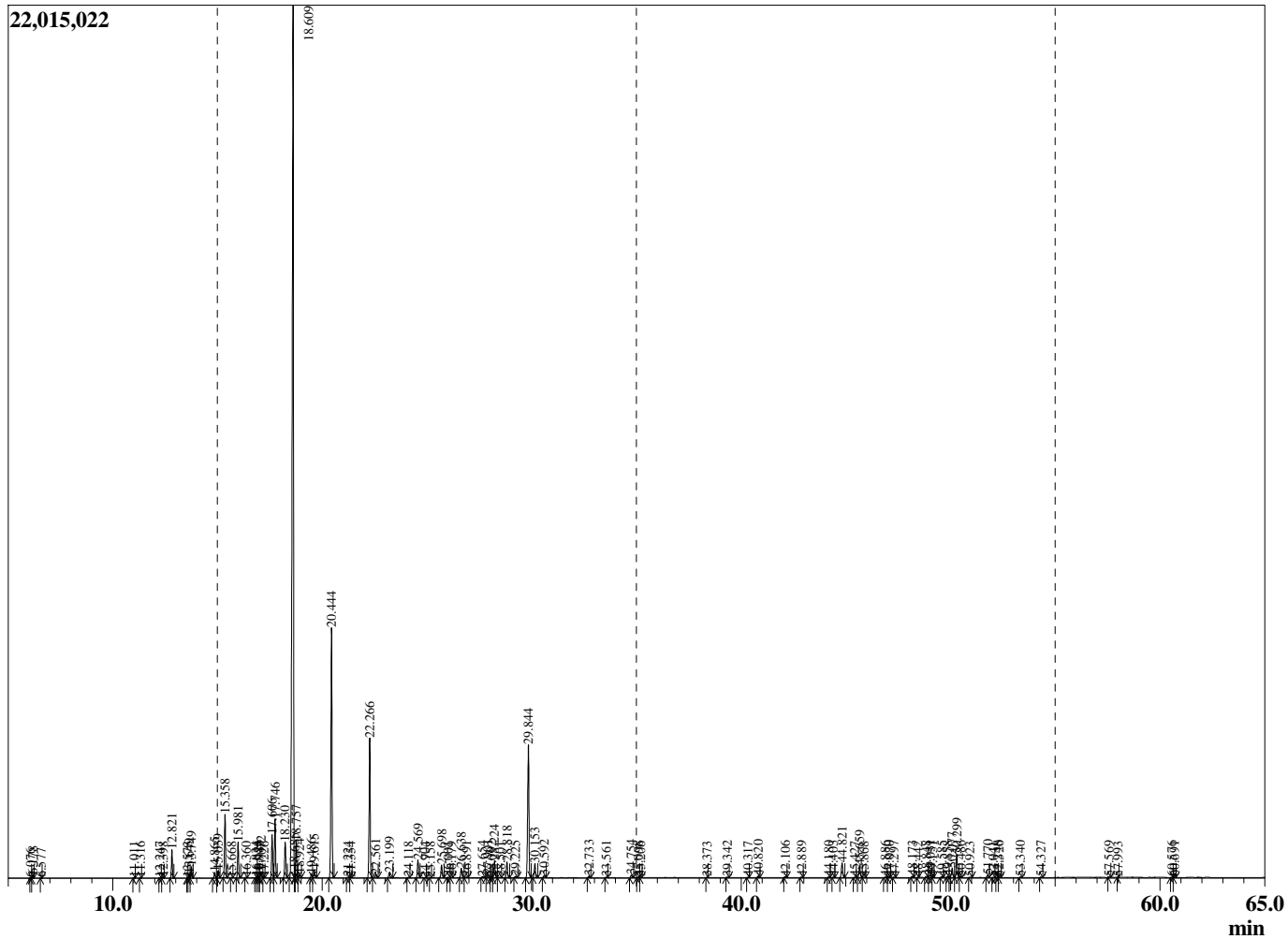
Sample Information

Analyzed : 4/6/2021 3:25:23 PM
 Sample Type : Essential Oil
 Sample Name : Citrus aurantifolia
 Injection Volume : 0.10

Lime Distilled
 Lot# MEF21-FC
 Country: Mexico



Chromatogram Citrus aurantifolia



R.Time	Name	Area%
6.076	Limediene isomer	0.01
6.178	Limediene	0.08
6.577	Limediene isomer	0.01
11.011	Nonane	0.02
11.316	Bornylene	0.01
12.247	Tricyclene	0.02
12.398	alpha-Thujene	0.03
12.821	alpha-Pinene	1.08
13.573	Unidentified	0.01
13.649	alpha-Fenchene	0.15
13.749	Camphene	0.43
14.865	Bois de Rose oxide	0.25
15.039	Sabinene	0.31
15.358	beta-Pinene	2.57
15.668	6-Methyl hept-5-en-2-one	0.01
15.981	Myrcene	1.46
16.360	Unidentified	0.02
16.834	Octanal	0.02
16.926	Pseudolimonene	0.03
16.984	Unidentified	0.04
17.072	alpha-Phellandrene	0.28
17.226	delta-3-Carene	0.02
17.606	1,4-Cineole	1.85
17.746	alpha-Terpinene	2.50
18.230	para-Cymene	1.65
18.609	Limonene	50.04
18.685	beta-Phellandrene	0.25
18.757	1,8-Cineole	1.44
18.924	(Z)-beta-Ocimene	0.15
19.486	2,2-dimethyl-5-(1-methyl-1-propenyl)-tetrahy	0.17
19.615	(E)-beta-Ocimene	0.36
20.444	gamma-Terpinene	11.47
21.224	1-Octanol	0.03
21.354	Unidentified	0.02
22.266	Terpinolene	6.34
22.561	para-Cymenene	0.16
23.199	Linalool	0.24
24.118	Unidentified	0.03
24.569	alpha-Fenchol	0.86
24.904	beta-Fenchol	0.01
25.158	allo-Ocimene	0.01
25.698	Terpin-3-en-1-ol	0.64
26.001	Unidentified	0.03
26.179	Epoxyterpinolene	0.01
26.638	trans-beta-Terpineol	0.47
26.891	Unidentified	0.04
27.654	Isoborneol	0.07
27.901	Unidentified	0.13
28.092	delta-Terpineol	0.04
28.224	Borneol	0.85
28.501	Unidentified	0.03
28.818	Terpinen-4-ol	0.78
29.225	para-Cymen-8-ol	0.07
29.844	alpha-Terpineol	6.89
30.153	gamma-Terpineol	0.69
30.592	Decanal	0.12

R.Time	Name	Area%
32.733	Neral	0.09
33.561	Nerol	0.03
34.754	Geranial	0.14
35.098	Decanol	0.03
35.206	Unidentified	0.01
38.373	Unidentified	0.01
39.342	delta-Elemene	0.03
40.317	Eugenol	0.02
40.820	Neryl acetate	0.07
42.106	Geranyl acetate	0.04
42.889	beta-Elemene	0.03
44.180	Dodecanal	0.03
44.403	cis-alpha-Bergamotene	0.02
44.821	trans-beta-Caryophyllene	0.83
45.427	Unidentified	0.02
45.659	trans-alpha-Bergamotene	0.61
45.868	Unidentified	0.02
46.886	(E)-beta-Farnesene	0.04
47.070	alpha-Humulene	0.04
47.297	beta-Santalene	0.03
48.173	Unidentified	0.06
48.442	Unidentified	0.01
48.848	Germacrene D	0.06
49.031	delta-Selinene	0.13
49.151	Unidentified	0.02
49.585	alpha-Selinene	0.04
49.858	alpha-Bisabolene	0.07
50.077	(E,E)-alpha-Farnesene	0.50
50.299	beta-Bisabolene	1.24
50.486	alpha-Bulnesene	0.04
50.923	delta-Cadinene	0.03
51.770	Unidentified	0.13
52.041	Unidentified	0.02
52.248	Unidentified	0.04
52.320	Selina-3,7(11)-diene	0.03
53.340	Germacrene B	0.03
54.327	Caryophyllene alcohol	0.04
57.569	gamma-Eudesmol	0.02
57.993	Unidentified	0.01
60.576	alpha-Bisabolol	0.02
60.691	beta-Bisabolol	0.02
		100.00